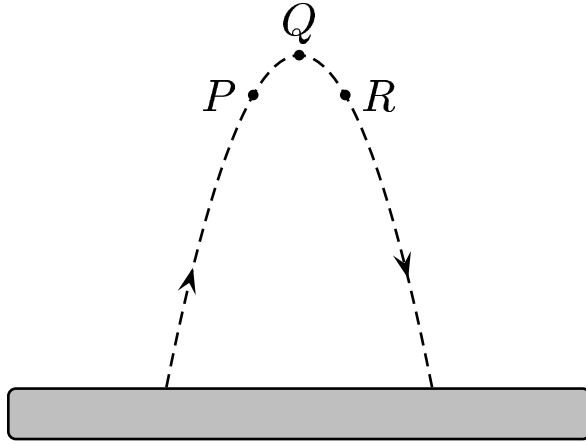


A ball is thrown and follows the parabolic path shown. Air friction is negligible. Point Q is the highest point on the path. Points P and R are the same height above the ground.



Which of the following diagrams best indicates the direction of the acceleration, if any, on the ball at point R ?

- A) 
- B) 
- C) 
- D) 

Since air friction is negligible, the only acceleration on the ball after being thrown is that due to gravity. The answer is



Answer **C**.

02.05-04 Acceleration at the top 2004-3-24