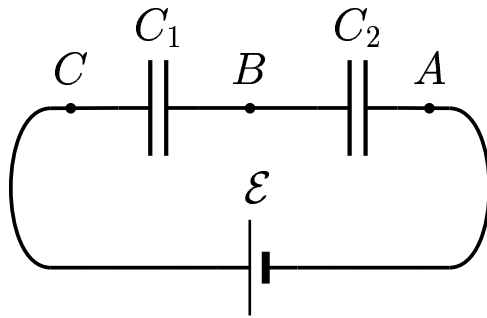


Given: Capacitances  $C_1$  and  $C_2$ , where  $C_2 > C_1$ .



Find the comparison between  $V_{BA}$  and  $V_{CB}$ .

- A)  $V_{BA} > V_{CB}$
- B)  $V_{BA} = V_{CB}$
- C)  $V_{BA} < V_{CB}$
- D) Cannot be determined.

$$V \equiv \frac{Q}{C}$$

Therefore, the larger voltage drop will be across the capacitor with the smaller capacitance.

Answer **C**.

26.05-02 Capacitors and Dielectrics 2004-3-24