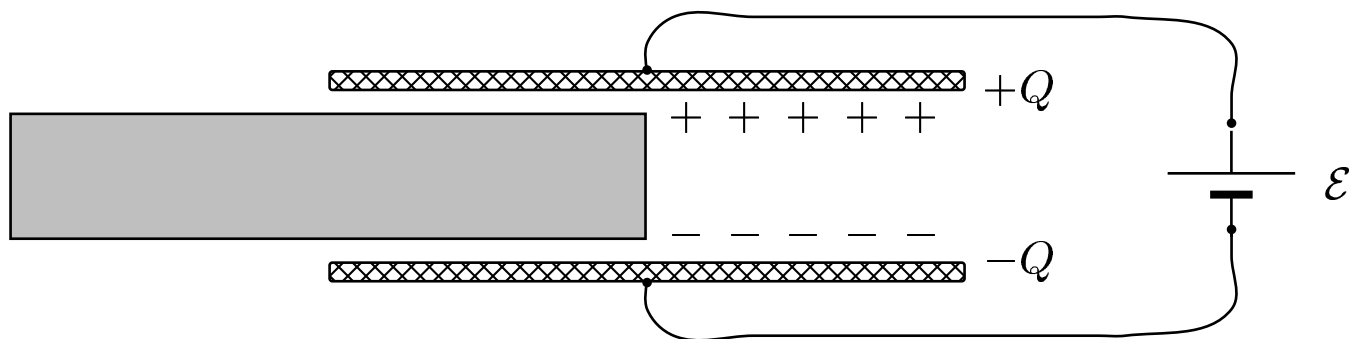


A dielectric slab is half-way into a charged capacitor.



Find the direction of the force on the slab.

- A) The direction of the forces is to left.
- B) The forces is zero, thus its direction is undetermined.
- C) The direction of the force is to right.

Going from no slab to the presence of a slab corresponds to going from a high potential energy to a low potential energy. The natural tendency is to have the slab moving toward filling the gap. In other words, there is an attractive force to the right.

Answer C.

26.05-05 Insert a Dielectric Slab 2004-3-24