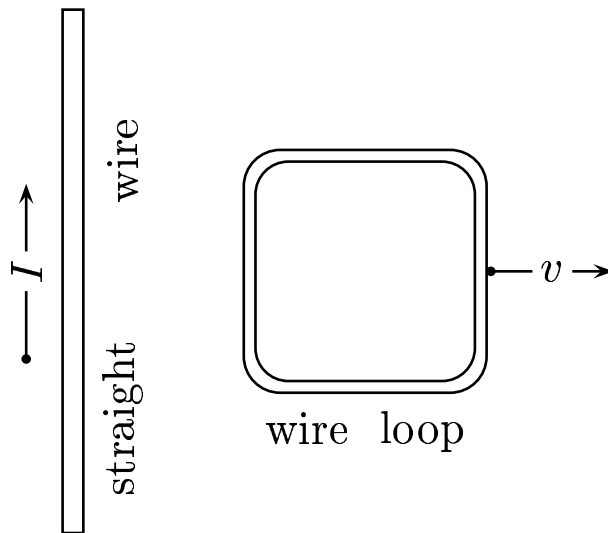


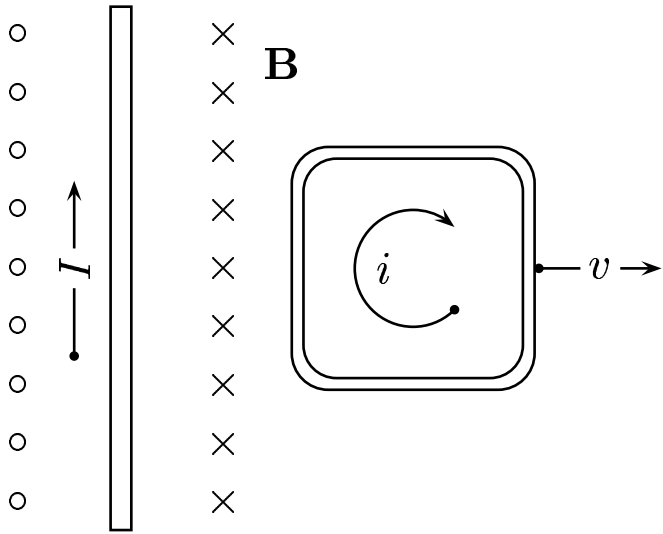
Given: A long straight wire and a wire loop in the same plane.



The current in the loop is flowing

- A) clockwise
- B) counter-clockwise
- C) There is no current in the loop.

Using the right-hand rule, in the following figure, and taking into consideration the direction of the magnetic field, we find that the direction of the current flowing in the loop is as shown in the figure.



Answer A.

29.01-04'Current Loop Directions 2004-10-12