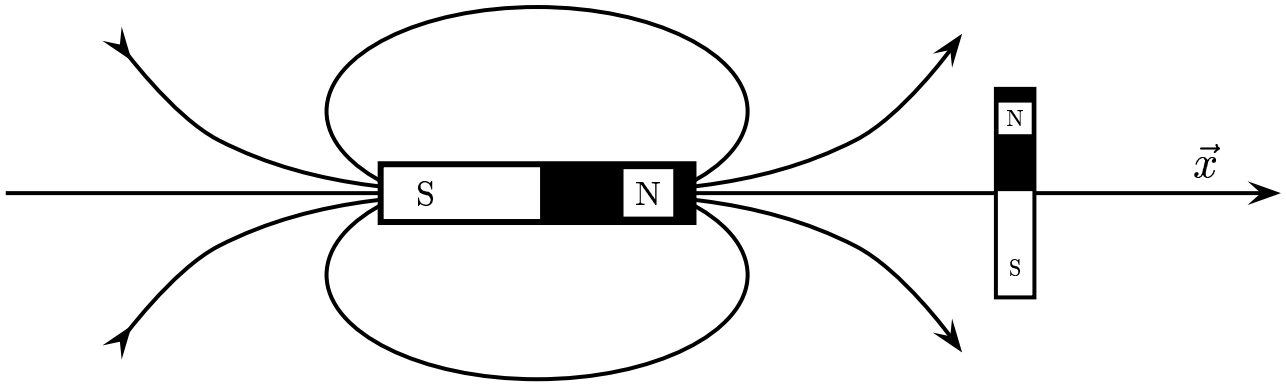


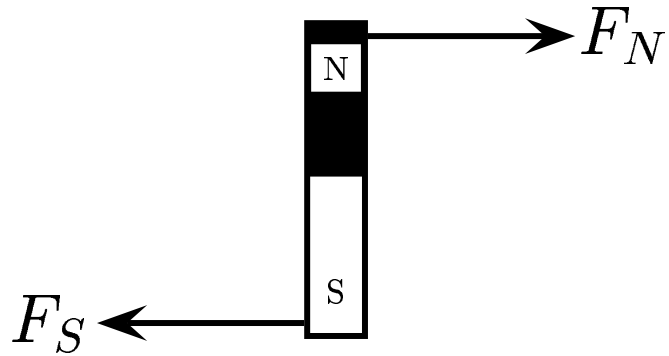
Consider a force which a magnetic dipole field asserts on a smaller magnetic dipole as shown below.



Find the direction of the x -component of the force on the magnetic dipole.

- A) $F_x = 0$, therefore the direction is uncertain.
- B) The direction is \leftarrow .
- C) The direction is \rightarrow .

Due to symmetry, we expect $F_x = 0$.



Answer A.

29.03-02b Magnet in Nonuniform Field 2004-3-24