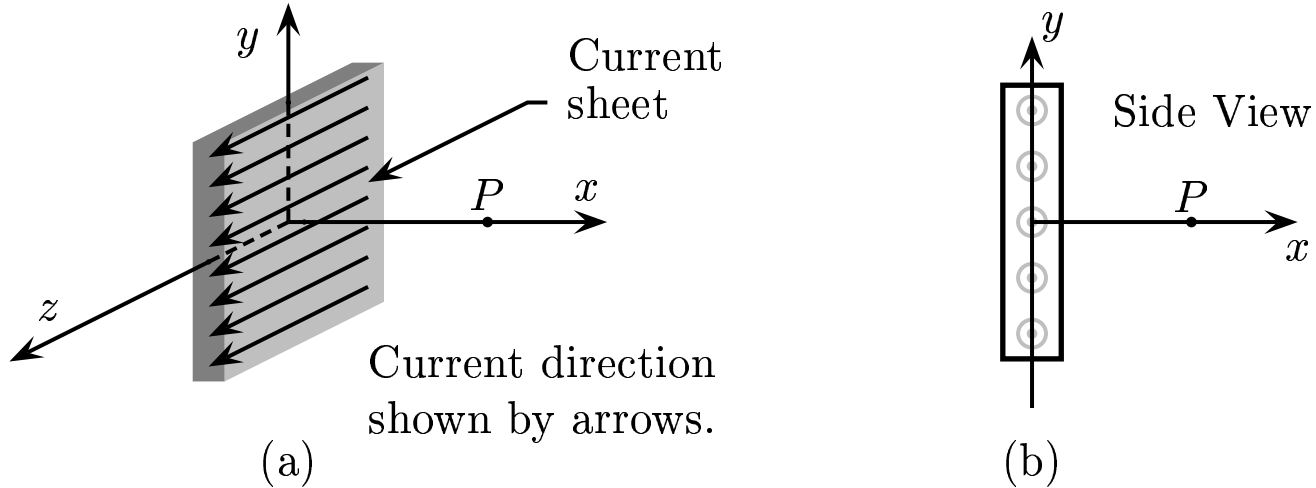


A sheet of current I , in the yz -plane at $x = 0$, is flowing along the positive z -direction. The current sheet has an infinite extent in both the y - and the z - directions. Figure (a) is a 3-dimensional view, and (b), a side view.



Find the direction of \vec{B} at P in Figure (b).

- A) The direction of \vec{B} is \rightarrow .
- B) The direction of \vec{B} is \leftarrow .
- C) The direction of \vec{B} is \uparrow .
- D) The direction of \vec{B} is \downarrow .

Based on the right hand rule, in figure (a) at P the \vec{B} field vector is

going upward and in figure (b), it is upward too. Answer **C**.

30.03-05 Field Due To Current Sheet 2004-3-24