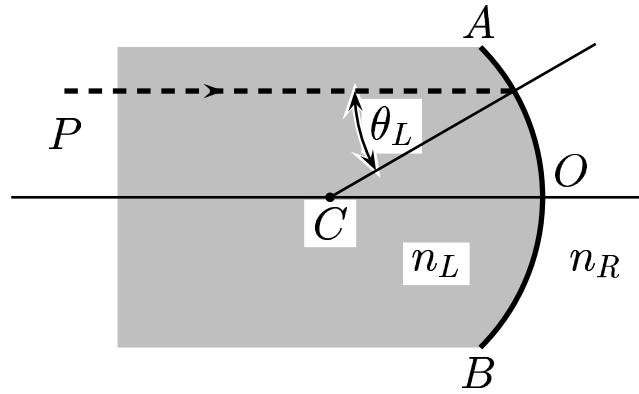


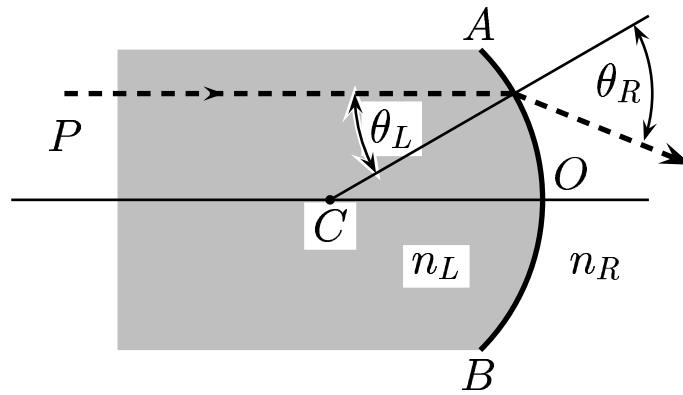
Consider a spherical surface AOB , where $n_L > n_R$.



Is it a convergent or a divergent surface?

- A) It is a convergent surface.
- B) It is a divergent surface.
- C) Neither of the above.

Inspection on the ray diagram shows $\theta_R > \theta_L$. This shows that the surface is convergent.



Answer **A**.

36.03-01 Convergent or Divergent 2004-3-24