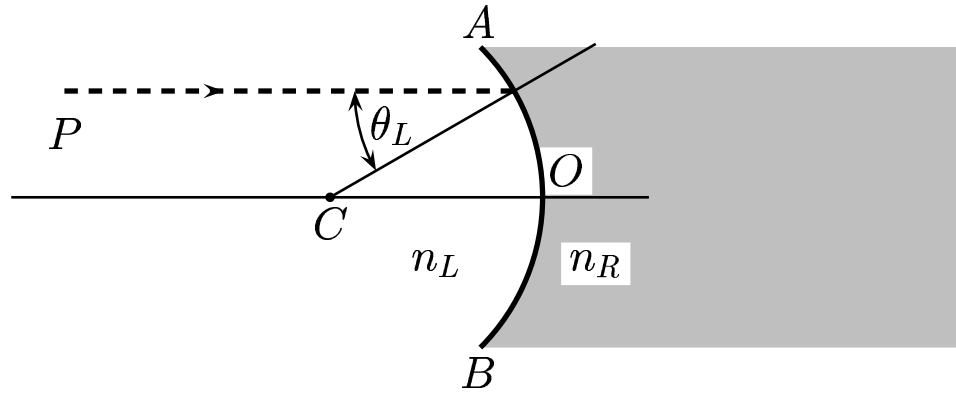


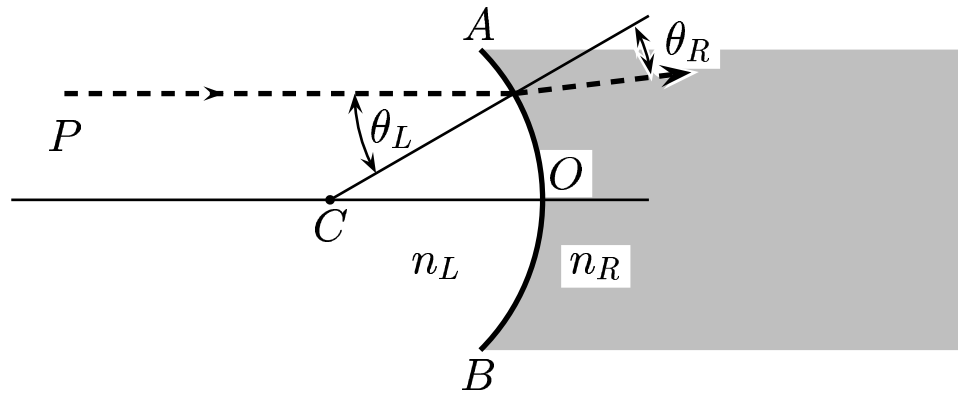
Consider a spherical surface  $AOB$ , where  $n_L < n_R$ .



Is it a convergent or a divergent surface?

- A) It is a convergent surface.
- B) It is a divergent surface.
- C) Neither of the above.

Inspection on the ray diagram shows  $\theta_R < \theta_L$ . This shows that the surface is divergent.



Answer **B**.

36.03-02 Convergent or Divergent 2004-3-24