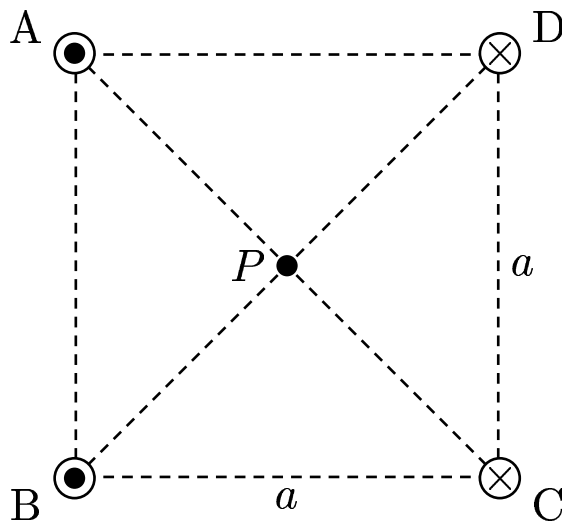
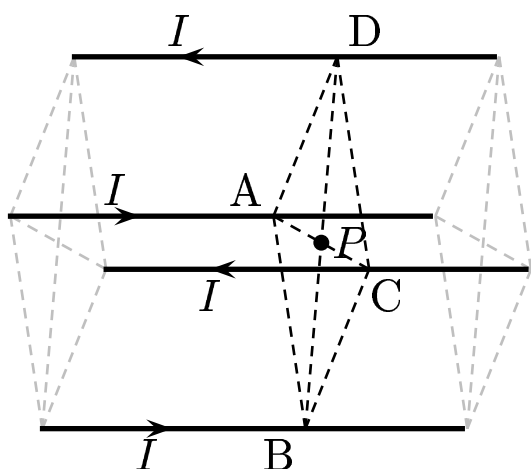


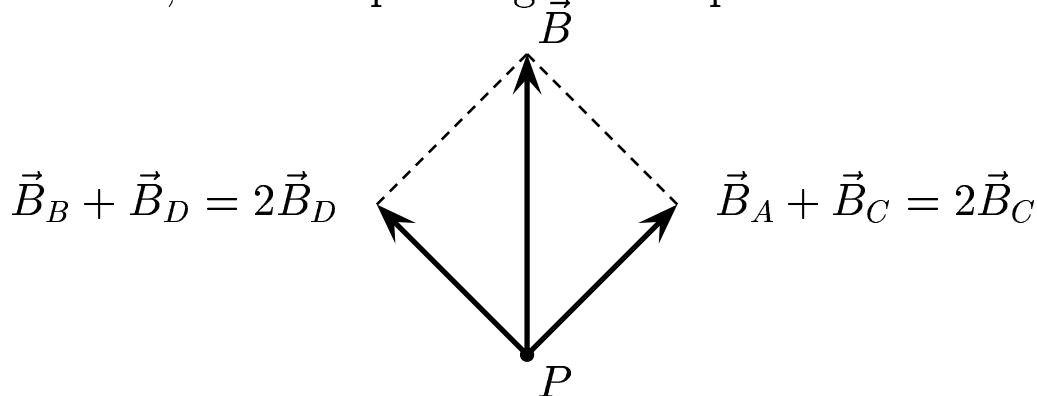
Consider 4 parallel wires shown in a 3d-view, and in a projected view from the right. The latter indicates that the wires are at four corners of a square, where each side has a length “ a ”.



Using the figure on the right, sketch the field vectors due to the four wires at P , the center point, and the resultant vector \vec{B} .

- A) The direction of \vec{B} is up. B) The direction of \vec{B} is down.
 C) The direction of \vec{B} is right. D) The direction of \vec{B} is left.

The situation at P is shown below. The vector sum gives the resultant field vector \vec{B} , which is pointing in the upward direction.



Answer A.