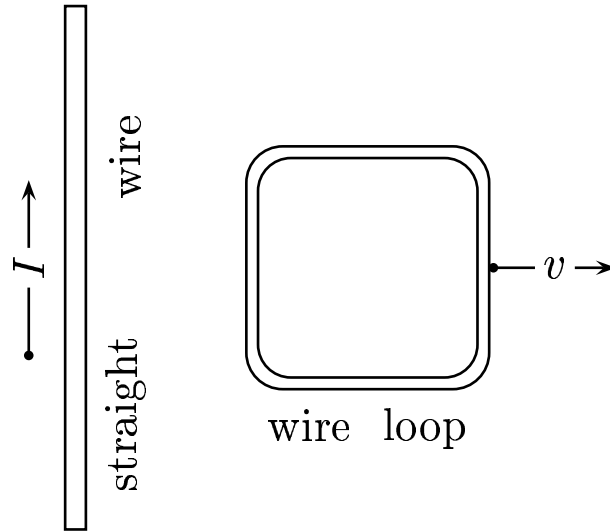


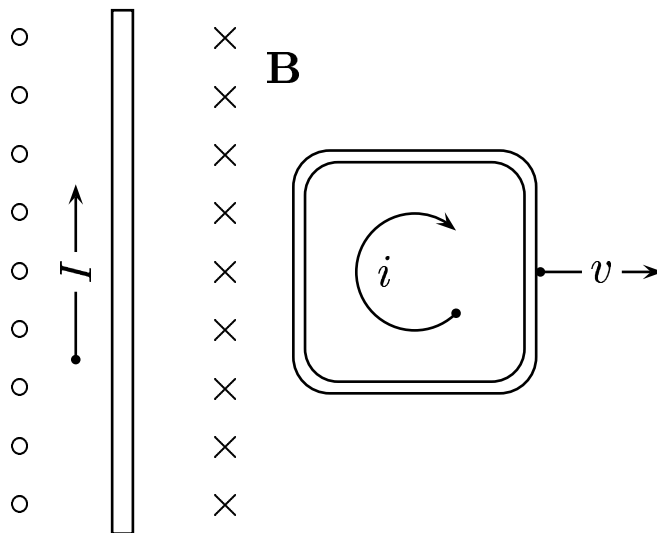
Given: A long straight wire and a wire loop in the same plane. The long wire has a current flowing in the direction shown. The wire loop is moving in the direction shown.



The current in the loop is flowing

- A) clockwise.
- B) counter-clockwise.
- C) The direction of the current is undetermined from information given.

Using the right hand rule, in the following figure, and taking into consideration the direction of the magnetic field, we find that the direction of the current flowing in the loop is as shown in the figure.



Answer **A**.